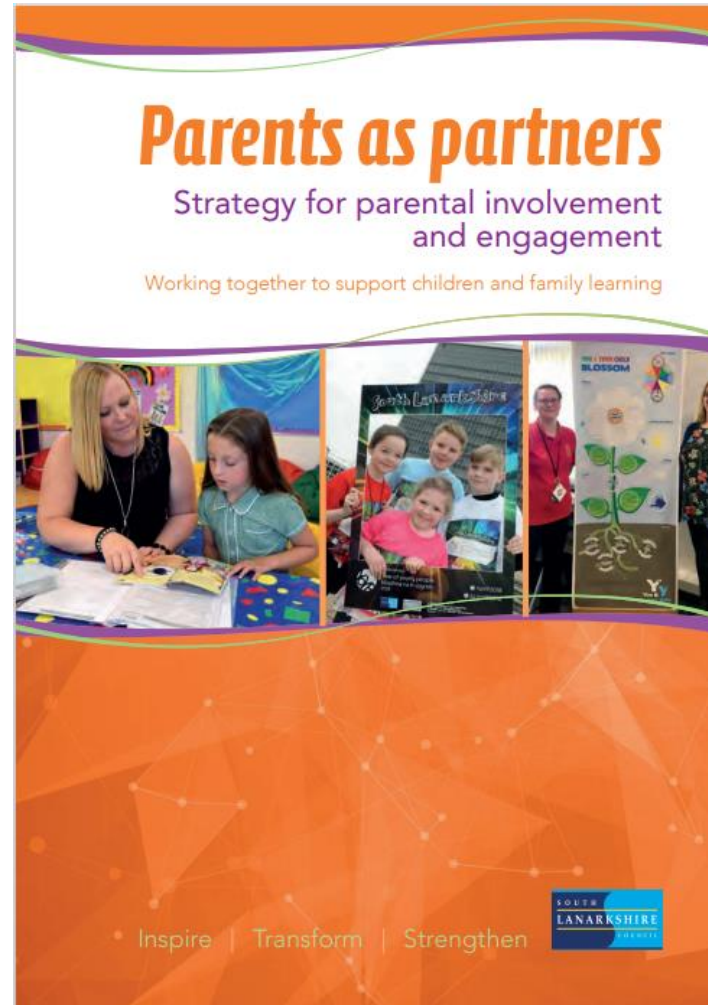


Parents as Partners

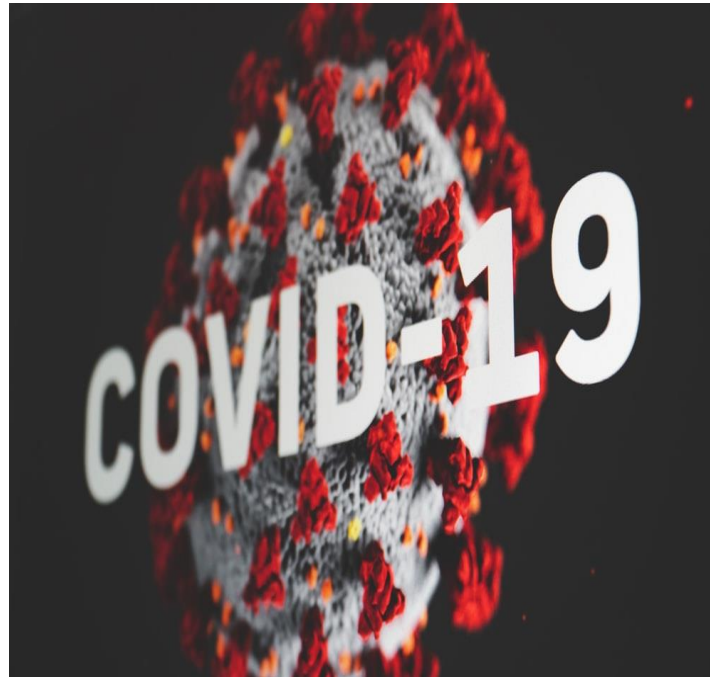
Locality Meetings – 25 November 2021



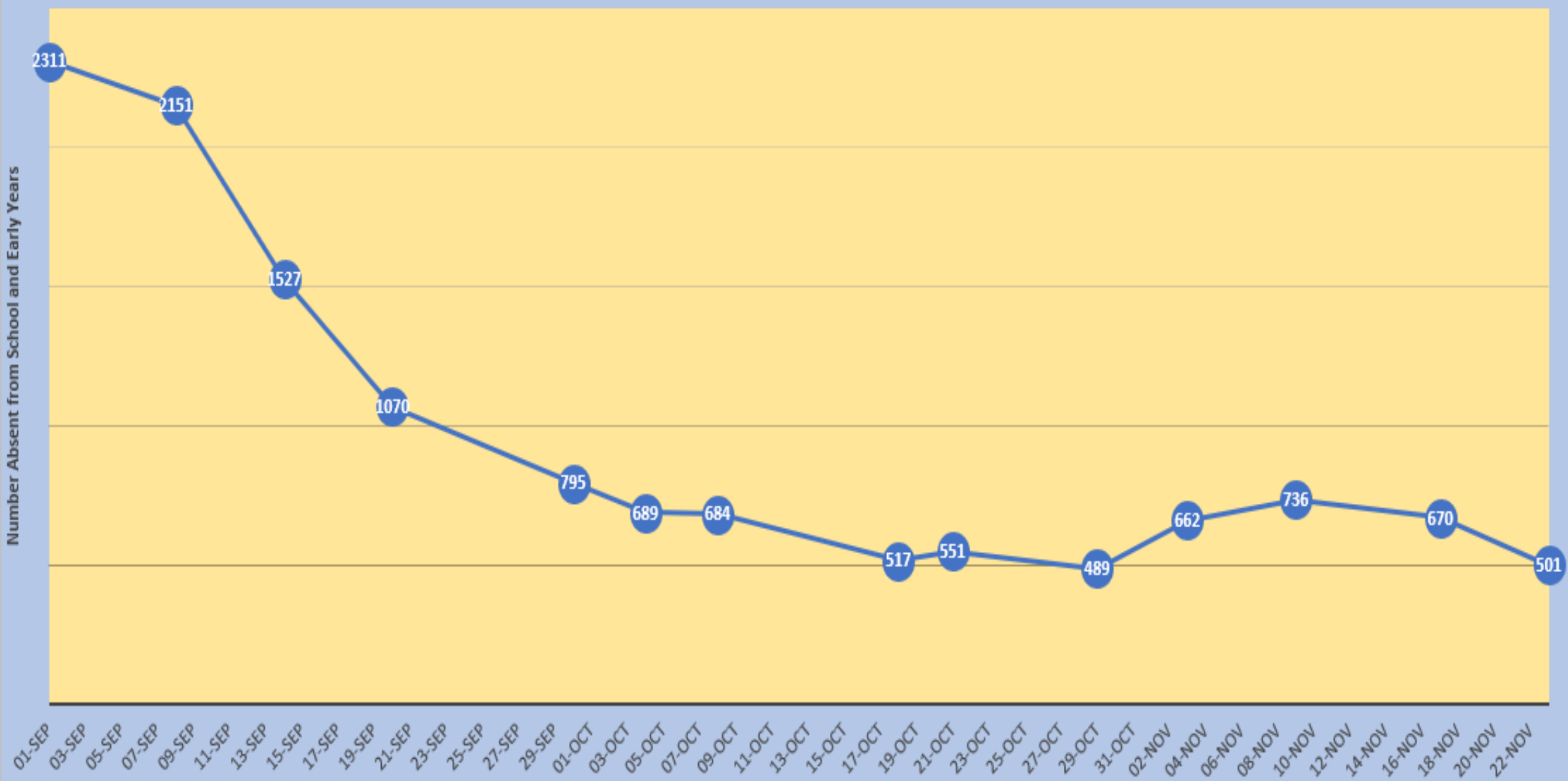
Covid Update

Des Dickson

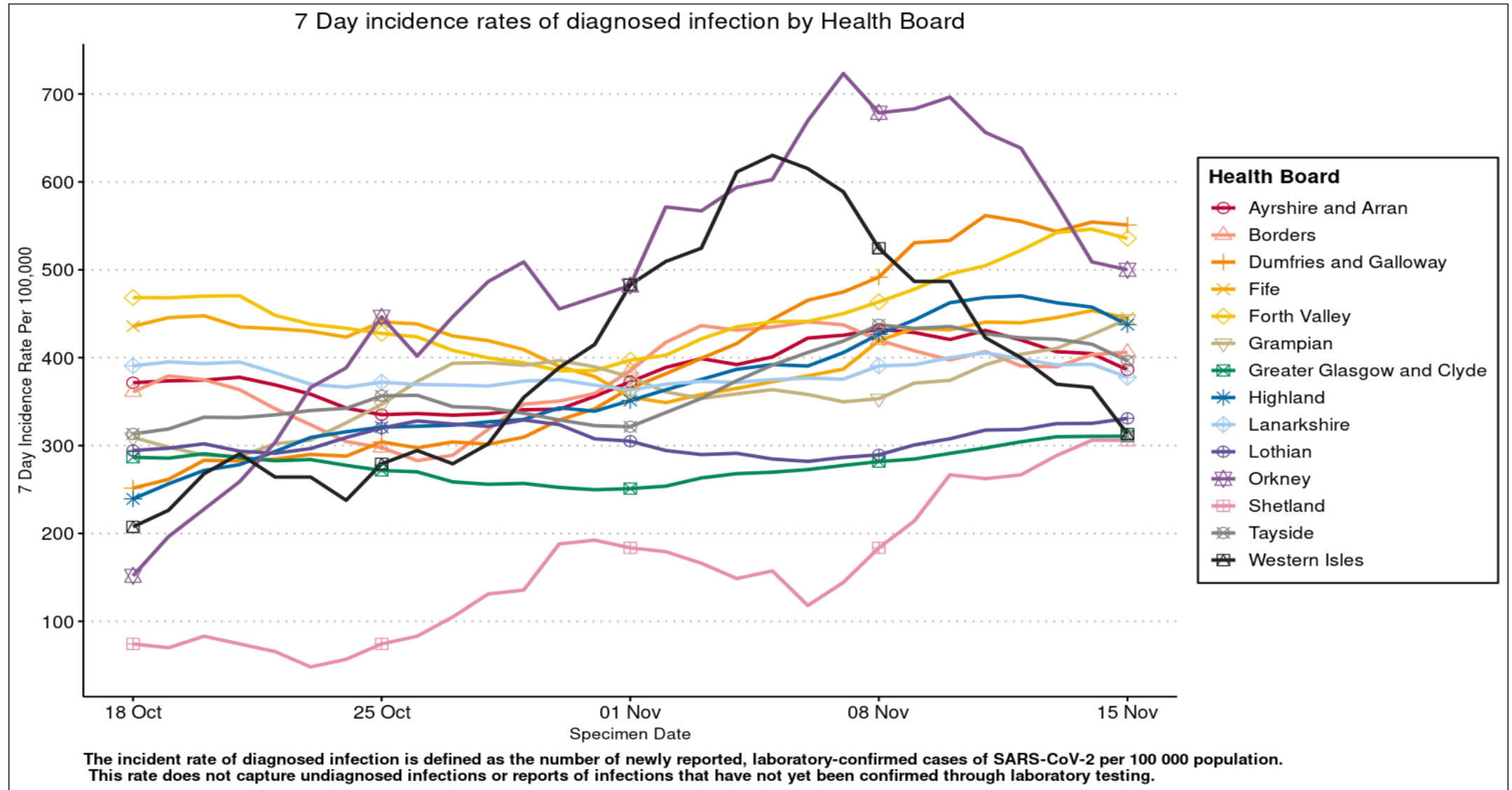
Education Operations Manager



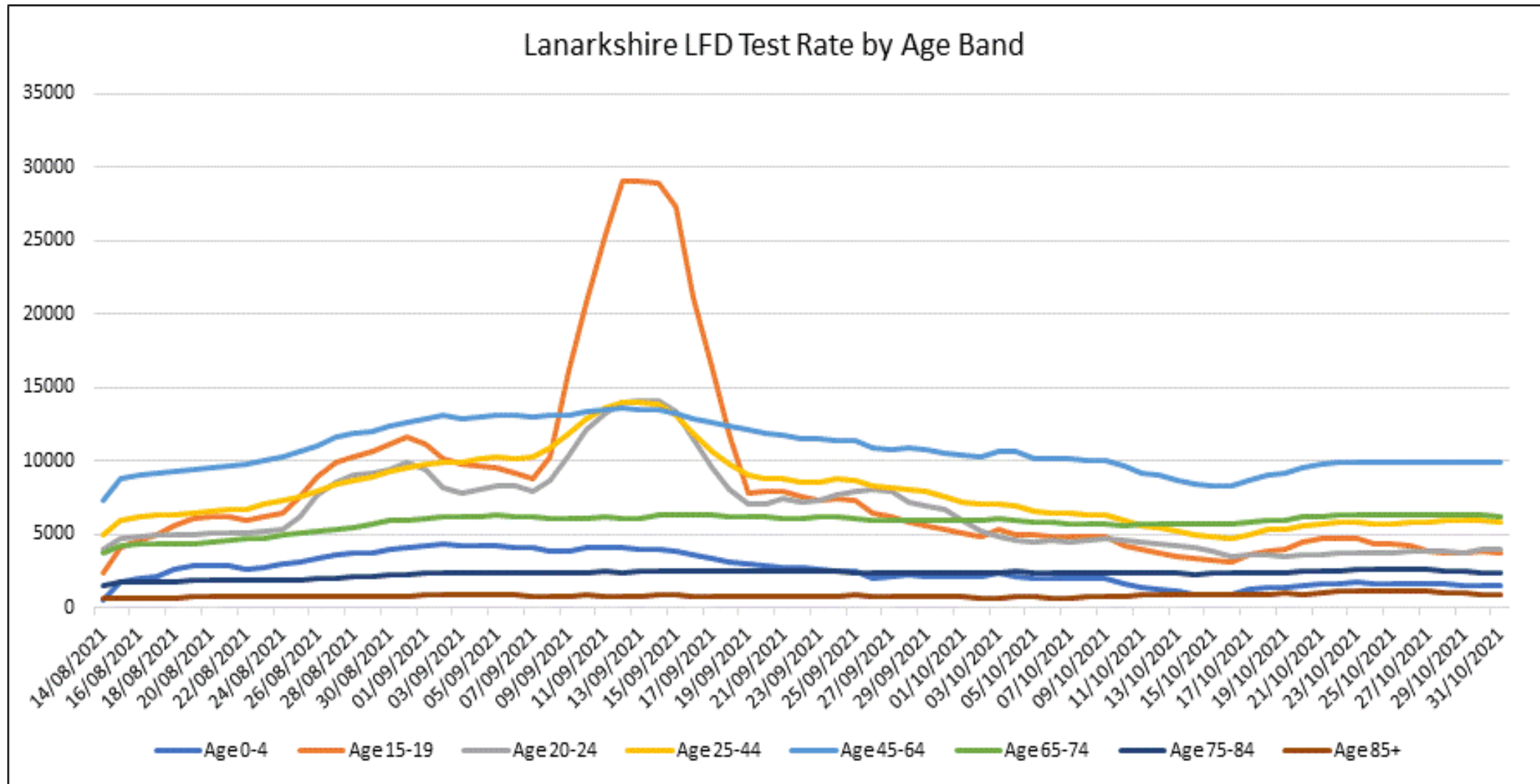
Children and Young People Self-Isolating due to Covid 19



Recent trends



Who is LFD testing?



Highest rates in SIMD 5, those aged 45-65 years and higher in females than males

Covid Vaccination

- Vaccination Uptake – Young People (12 – 15 Years Old)

Covid Vaccination Uptake (12 - 15 Years Old)		
Within Scotland	Within NHS Lanarkshire	Within South Lanarkshire
57%	53%	57%

Primary School

Pupils – 73%

Staff – 70%

Secondary School

Pupils – 61%

Staff – 76%



Source: pan Lanarkshire data (22 October 2021) - NHLS

- Sept Change on dealing with SI and + cases
Information and Inform letters (NHSL)
- Sept NHSL monitor daily absence records
- Oct Education Resources guidance on events/activities
- 19 Oct **Covid-19 Safety in Schools (SG Update)**
safety mitigations remain in place
staff in Prim/Sec will require to wear face coverings
(*communal areas/moving around the building*)
Secondary pupils to wear face covering in classes
restrictions on parents/carers assemblies/gatherings
- 19 Oct **Covid-19 Safety in Childcare Settings**
may accompany child onto premises/outdoor events
- 17 Nov 57% of children (12-15 years) now vaccinated

Nat advice from CMO, senior clinicians for schools/education (19 Oct 2021)

***Mitigations extended in all schools/educational settings
(19 October 2021)***

- Safety of staff, children and young people over riding priority
- CMO - still the need for a more cautious approach
- Remain vigilant
- Avoid complacency
- Monitor absences
- LFT twice weekly and record
- HSE complimented infection control measures in place in schools



Assemblies



Halloween (RP)



Christmas (RP)



*Residential ***



Outdoor events



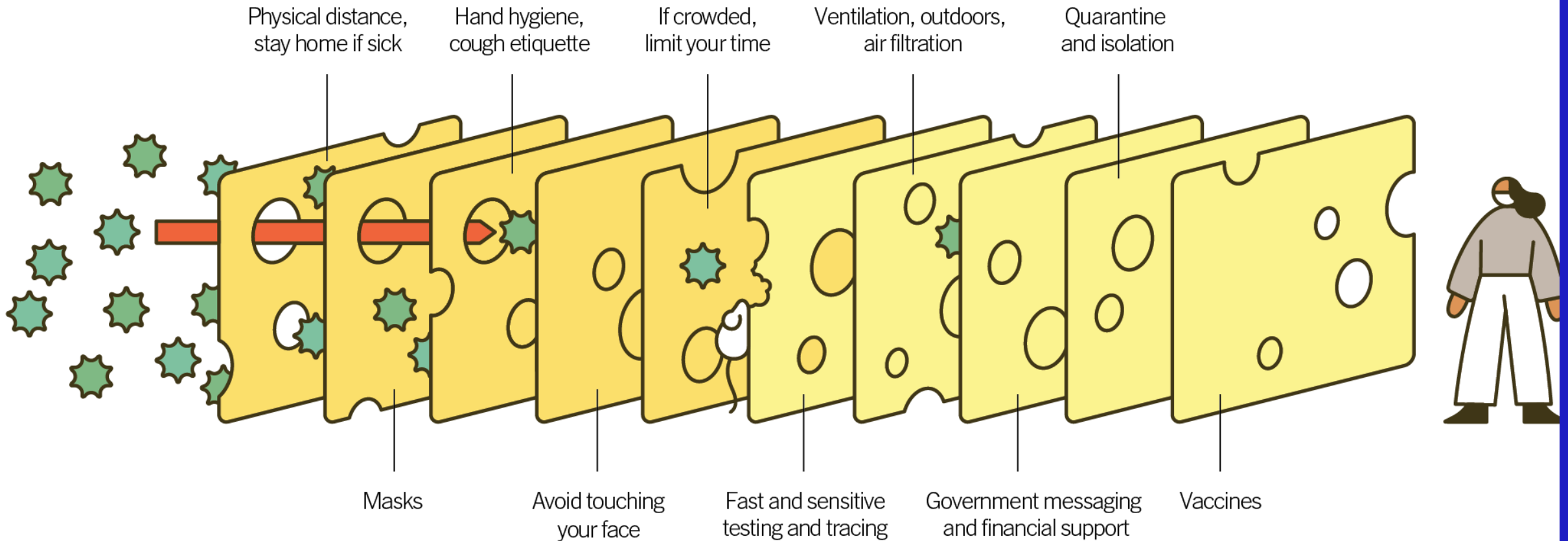
RP – Restricted for parents

Multiple Layers Improve Success

The Swiss Cheese Respiratory Pandemic Defense recognizes that no single intervention is perfect at preventing the spread of the coronavirus. Each intervention (layer) has holes.

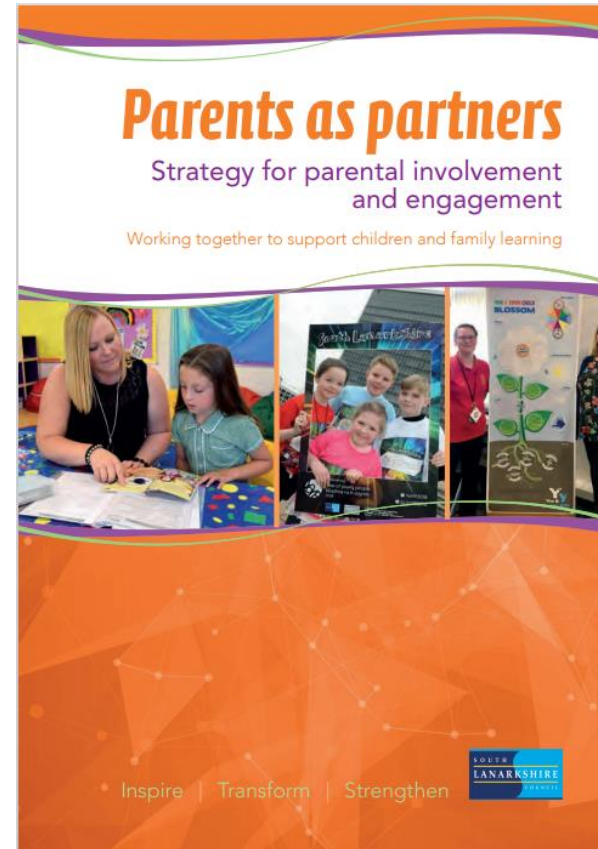
Personal responsibilities

Shared responsibilities



Parents as Partners

Locality Meetings – 25 November 2021



Review of South Lanarkshire Council's Education Resources priorities

Tony McDaid
Executive Director
Education Resources



National and international perspective

– **OECD Input**

– **ICEA Council of Education Advisers**

Report 2018-20

– **Audit Scotland**

- Improving outcomes for young people through school education

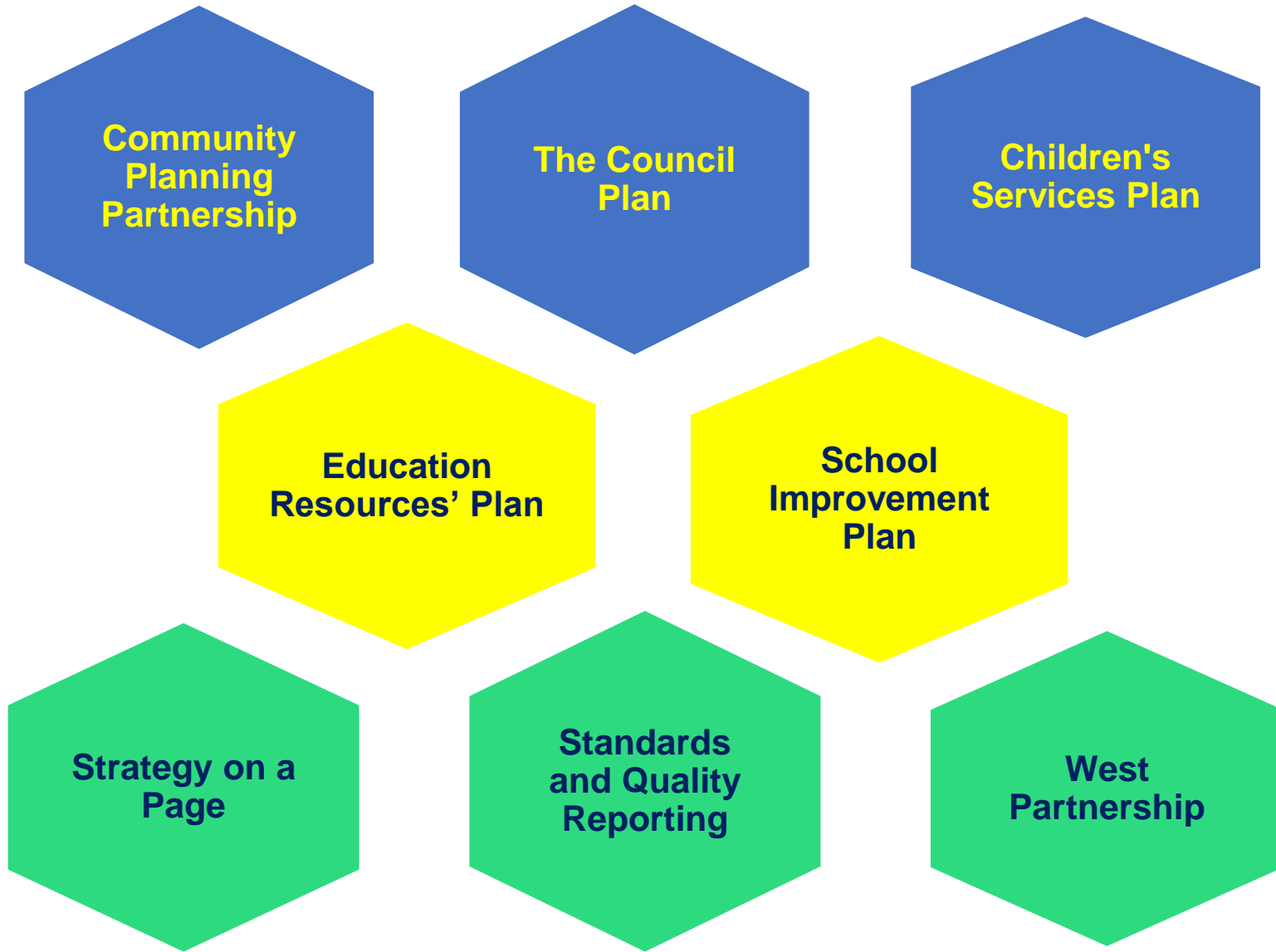


Education Overview 2021/22

Scottish Government commitments:

- Additional teaching and support staff
- Removal of core curriculum charges
- Removal of charges for instrumental music tuition
- Free school meals in primary school for all children
- Free breakfast clubs
- Digital devices for all children and young people
- Reduction in contact time for teachers
- Review of Scottish Attainment Challenge
- Continuation of young person's guarantee

Setting out our objectives and priorities



Strategy on a page

Our current strategy on a page sets out our vision, values and priorities:

Our Vision
Improve the quality of life of everyone in South Lanarkshire

Our Values
Focused on people and their needs
Working with and respecting others
Accountable, effective, efficient and transparent
Ambitious, self aware and improving
Fair, open and sustainable
Excellent employer

inspire
transform
strengthen



Our Purpose:

To raise achievement and attainment, inspire learners, transform learning, and work in partnership to strengthen our communities.

Our priorities are to:

Raise standards in literacy and numeracy and close the poverty-related attainment gap.

Improve health and wellbeing to enable children and families to flourish.

Support children and young people to develop their skills for learning, life and work.

Ensure inclusion and equality are at the heart of what we do.

To take forward our priorities we will:

- › Provide high-quality learning experiences for all
- › Deliver a meaningful curriculum to support the learner journey
- › Use evidence to effect improvement
- › Build leadership capacity within a strong framework of governance
- › Encourage innovation and creativity
- › Strengthen our partnership working

Key areas:

We have set out what we want to achieve:

- **Delivery of safe environments**
- **A focus on wellbeing**
 - *Implementation of Attachment Strategy*
- **Curriculum, learning and assessment**
 - *Develop both a post Covid-Literacy and Numeracy Strategy*
- **Ongoing implementation of the SLC Equity Strategy**
 - *Close the poverty related attainment gap/*
 - *Reduce the cost of the school day*
- **Digital inclusion and remote learning**
 - *Support digital learning & engagement*
- **Early learning and childcare**
 - *Implement 1140 hours of free early learning and childcare*
- **Communication and engagement**

Our context – SLC Education Resources

Number of children and young people 50,000+

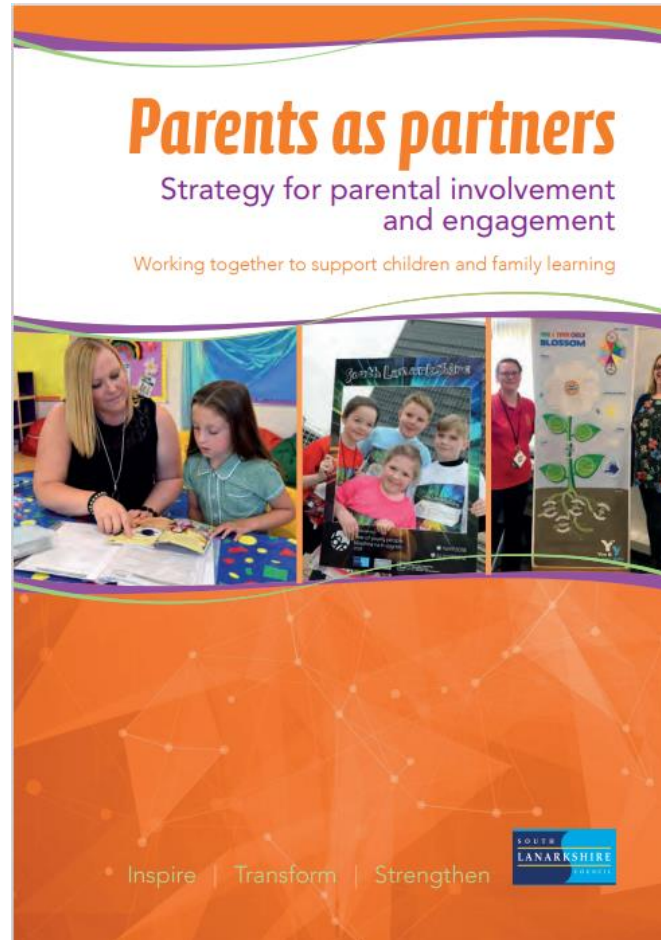
Staff 7,000 +	<ul style="list-style-type: none">• 3967 teaching staff• 3040 local government staff
Revenue Budget	£353.6m 93% - schools and EYs

Consultation Framework

Our Stakeholders (Inform)	Gathering and seeking views (Methods)		Timeframe
Professional Associations/Trade Unions	<ol style="list-style-type: none"> 1. 2. 3. 4. 	Webinar/Podcast - Setting the scene JNCC JCC Survey Form	Nov/Dec
Partners (eg Police, NHSL, Third Sector etc) West Partnership	<ol style="list-style-type: none"> 1. 2. 3. 	Webinar/Podcast - Setting the scene Invitation to comment Social Media survey	Nov/Dec
Council Resources	<ol style="list-style-type: none"> 1. 2. 	Webinar/Podcast - Setting the scene Social Media survey	Nov/Dec
Elected members	<ol style="list-style-type: none"> 1. 2. 3. 	Webinar/Podcast - Setting the scene Locality meetings (ref chair) Social media survey	Nov/Dec

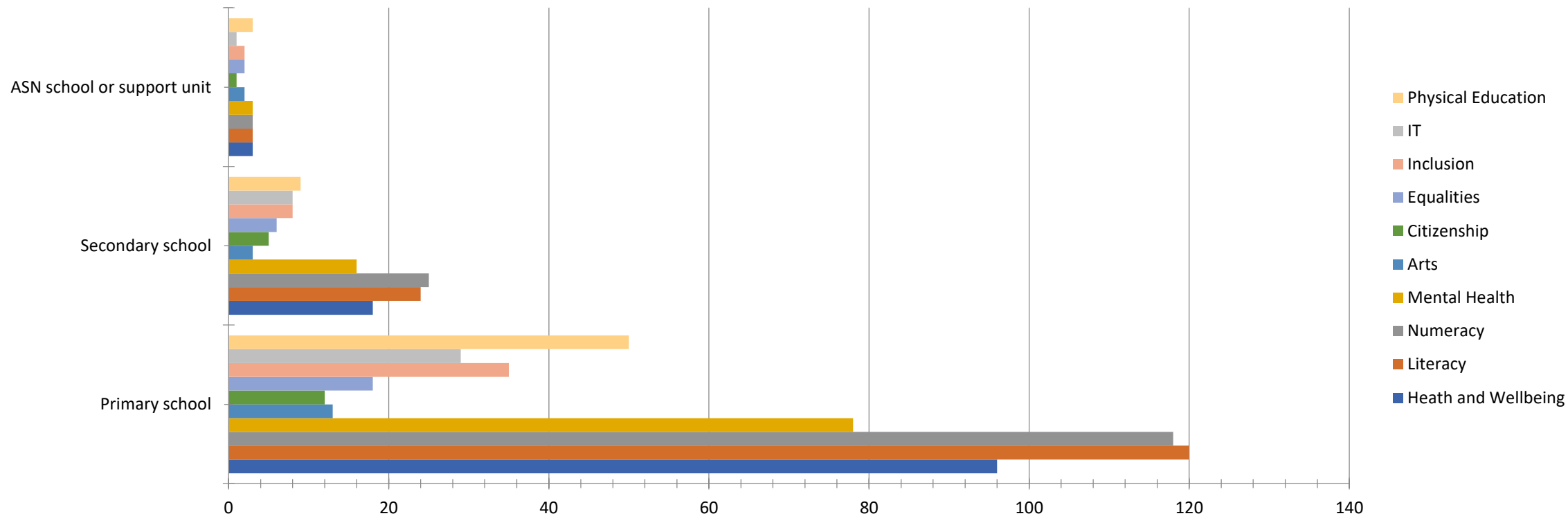
Parents as Partners

Locality Meetings – 25 November 2021



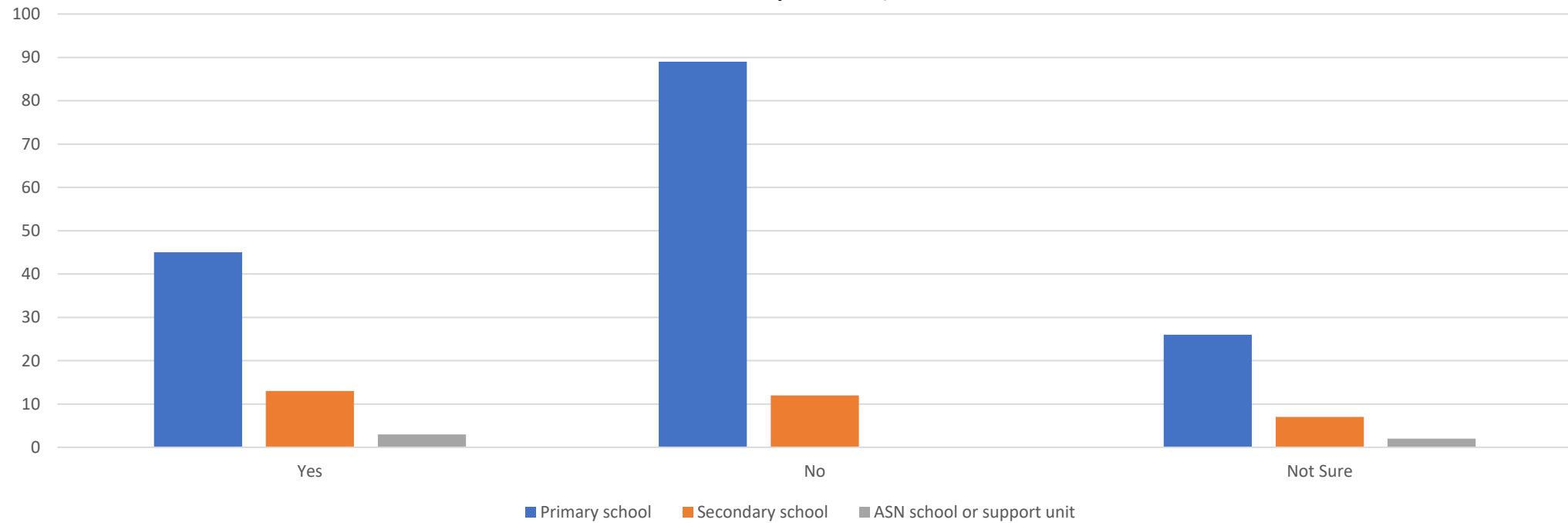
**Feedback on what parents and carers have said
(Survey 2020)**

What would you like to see the school prioritise after the recent school closures? Select all that apply (Number of Responses)



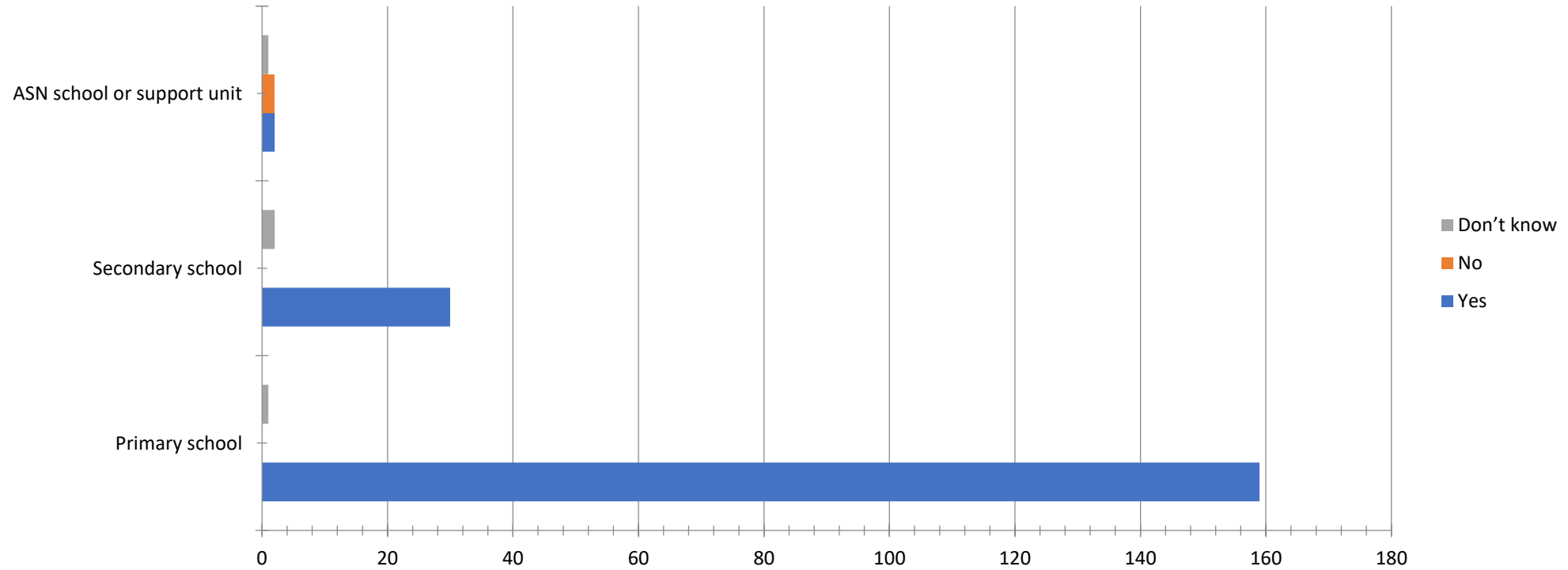
Percentages	Health and Wellbeing	Literacy	Numeracy	Mental Health	Arts	Citizenship	Equalities	Inclusion	IT	Physical Education	Row Totals
Primary school	16.9	21.1	20.7	13.7	2.3	2.1	3.2	6.2	5.1	8.8	100.0
Secondary school	14.8	19.7	20.5	13.1	2.5	4.1	4.9	6.6	6.6	7.4	100.0
ASN school	13.0	13.0	13.0	13.0	8.7	4.3	8.7	8.7	4.3	13.0	100.0
Column Totals	16.4	20.6	20.4	13.6	2.5	2.5	3.6	6.3	5.3	8.7	100.0

I am aware of the priorities in the School Improvement Plan (Number of Responses)



Percentages	Yes	No	Not Sure	Row Totals
Primary school	28.1	55.6	16.3	100.0
Secondary school	40.6	37.5	21.9	100.0
ASN school	60.0	0.0	40.0	100.0
Column Totals	31.0	51.3	17.8	100.0

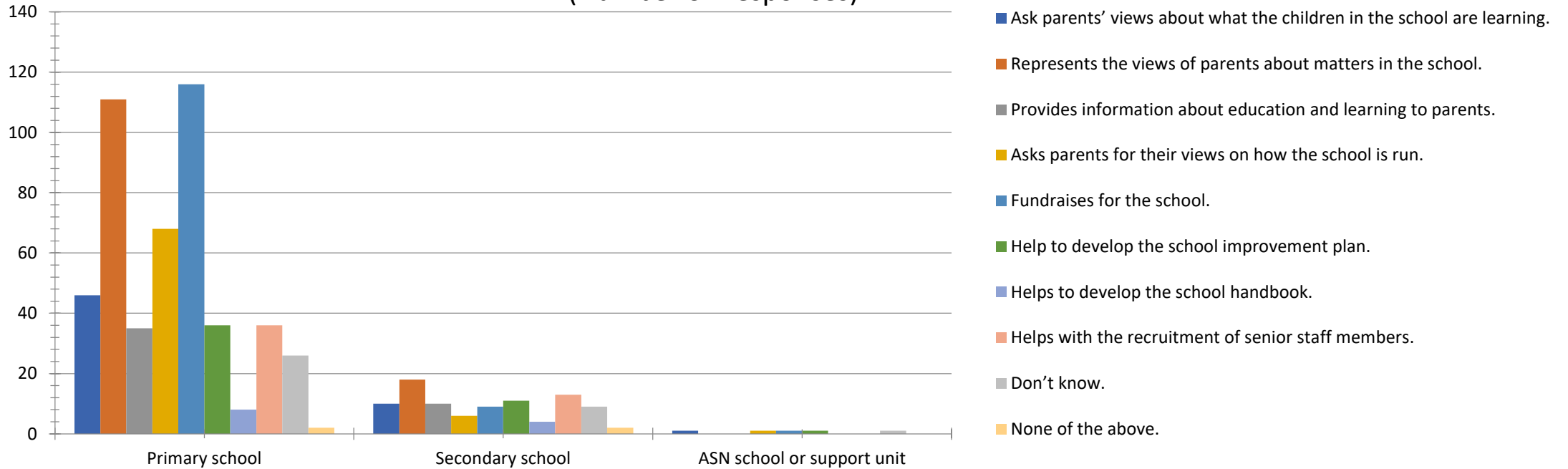
Does the school have a Parent Council? (Number of Responses)



Percentages	Yes	No	Don't know	Row Totals
Primary school	99.4	0.0	0.6	100.0
Secondary school	93.8	0.0	6.3	100.0
ASN school	40.0	40.0	20.0	100.0
Column Totals	97.0	1.0	2.0	100.0

Which of the following does the Parent Council do?

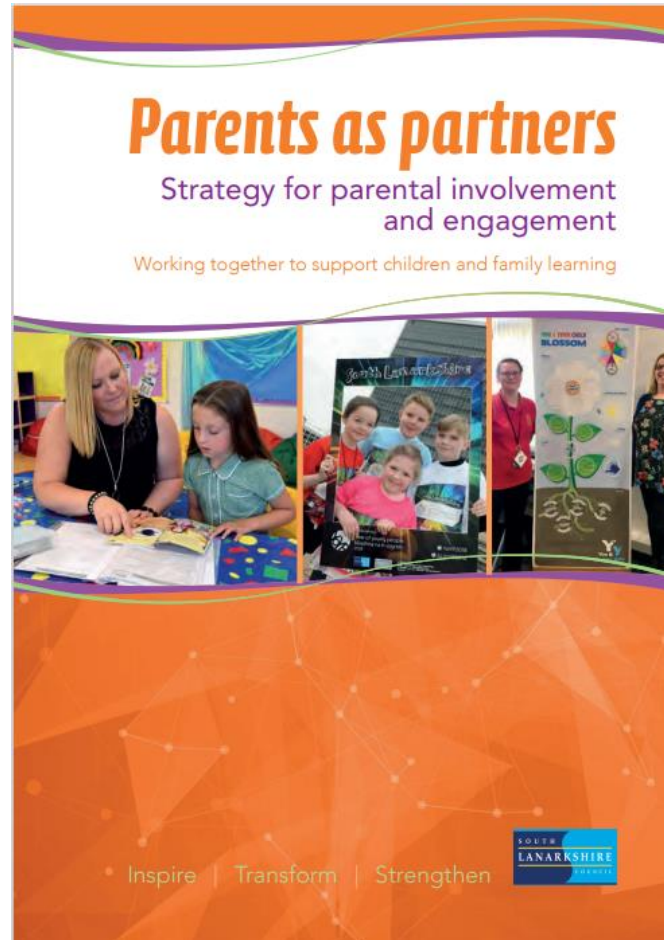
(Number of Responses)



Percentages	Ask parents' views about what the children in the school are learning	Represents the views of parents about matters in the school	Provides information about education and learning to parents	Asks parents for their views on how the school is run	Fundraises for the school	Help to develop the school improvement plan	Helps to develop the school handbook	Helps with the recruitment of senior staff members	Don't know	None of the above	Row Totals
Primary school	9.5	22.9	7.2	14.0	24.0	7.4	1.7	7.4	5.4	0.4	100.0
Secondary school	10.9	19.6	10.9	6.5	9.8	12.0	4.3	14.1	9.8	2.2	100.0
ASN school	20.0	0.0	0.0	20.0	20.0	20.0	0.0	0.0	20.0	0.0	100.0
Column Totals	9.8	22.2	7.7	12.9	21.7	8.3	2.1	8.4	6.2	0.7	100.0

Parents as Partners

Locality Meetings – 25 November 2021



What are your views on our priorities for SL Education Resources?